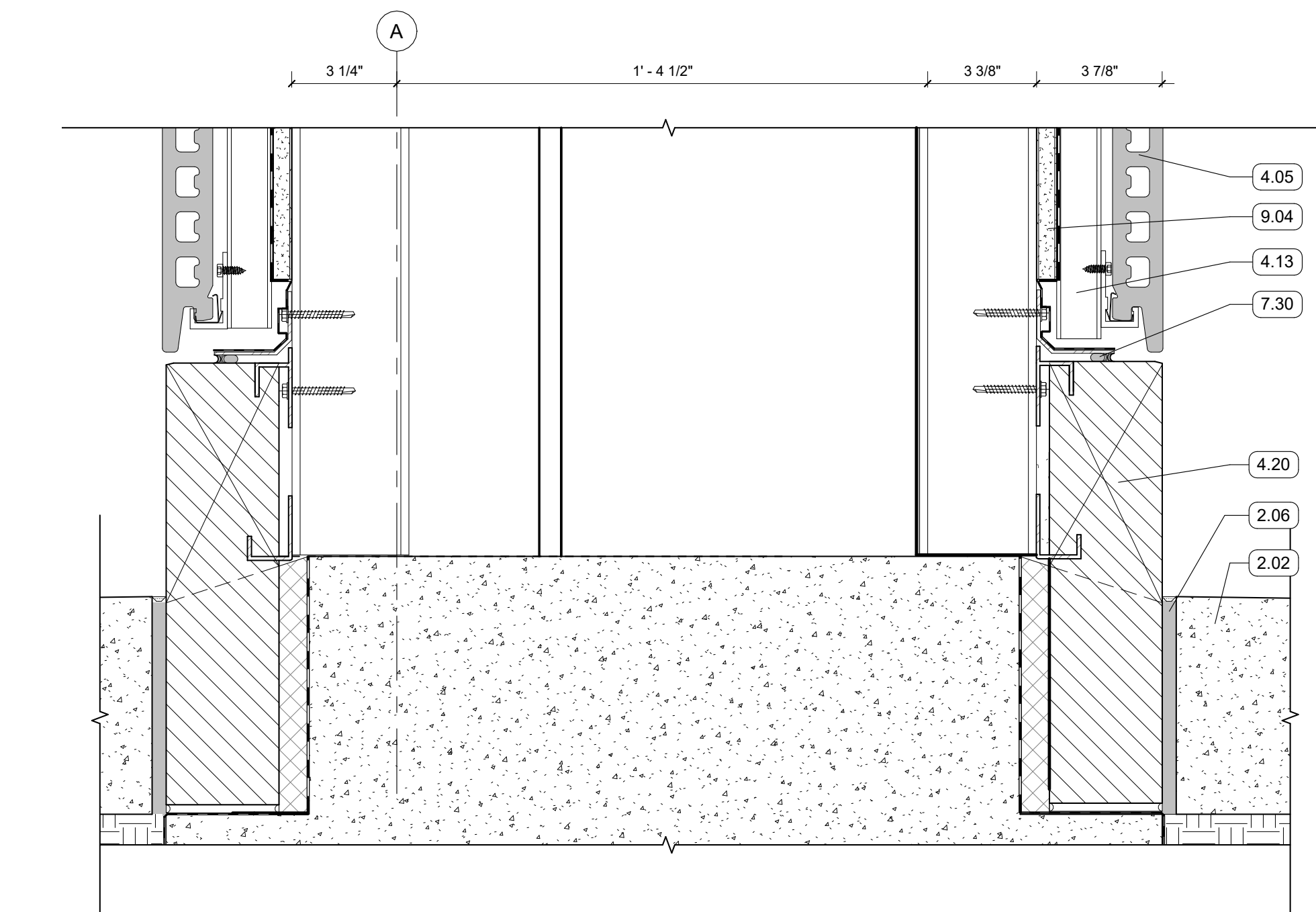
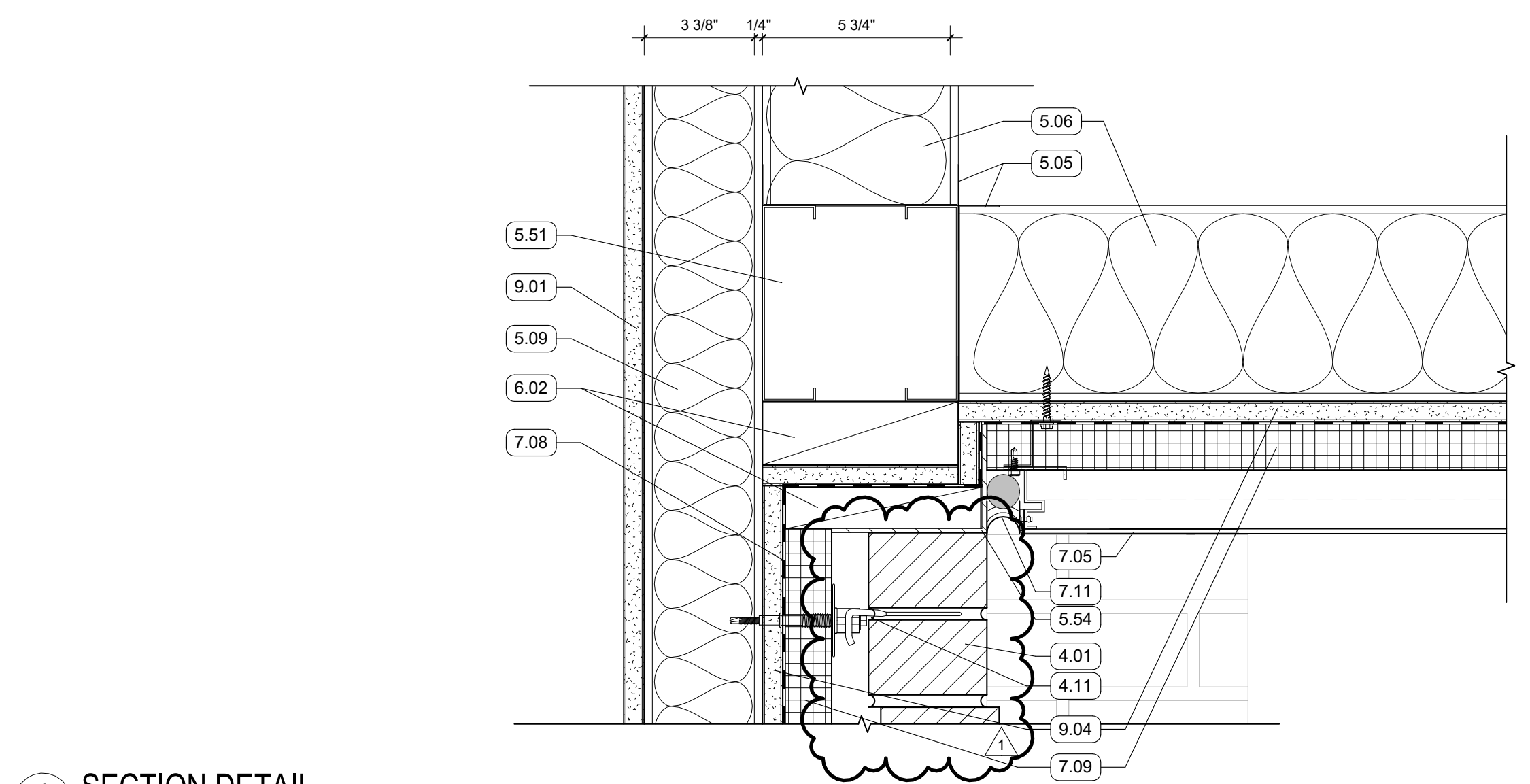


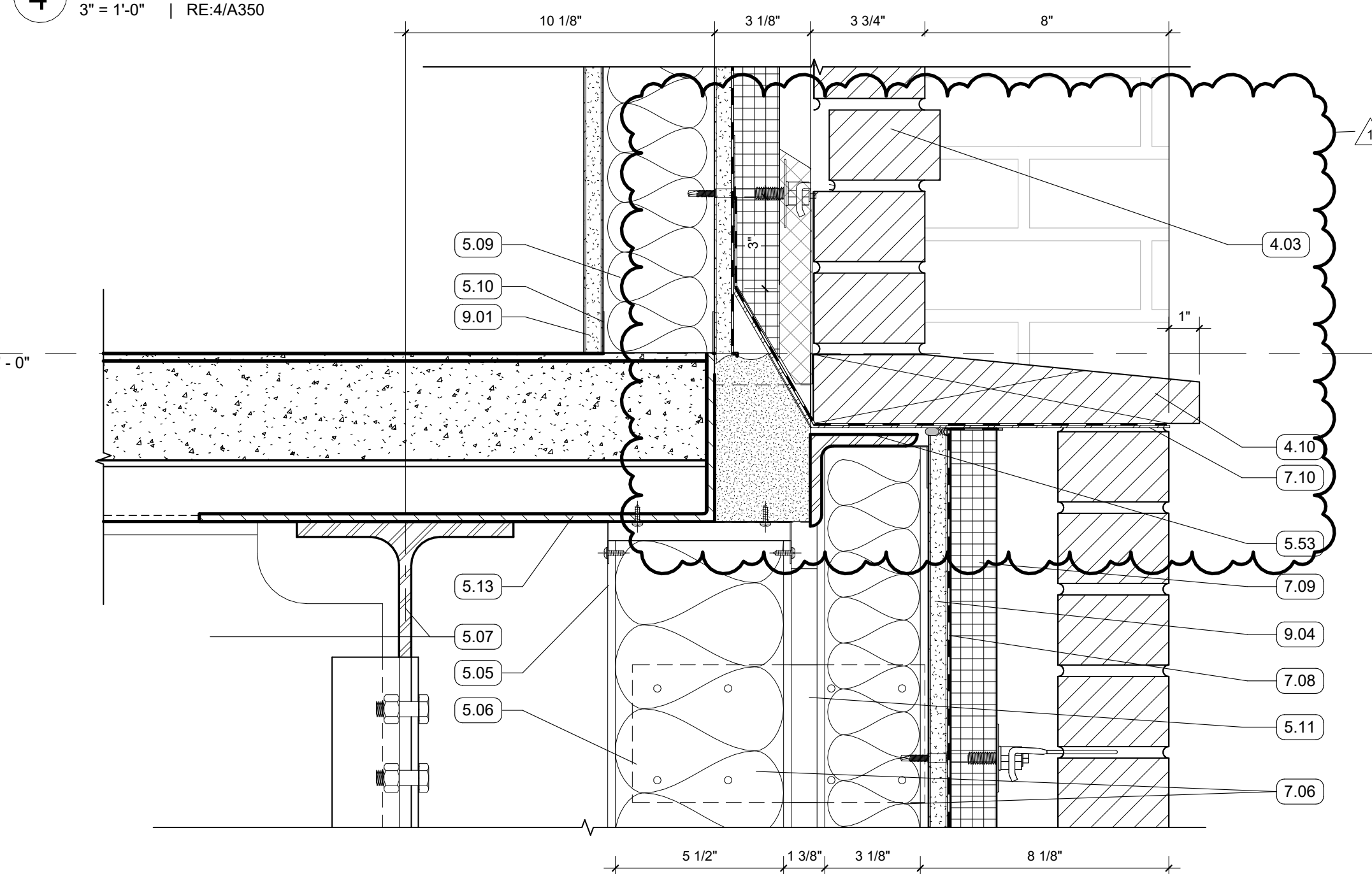
2 SECTION DETAIL
3\" = 1'-0\" | RE:3/A350



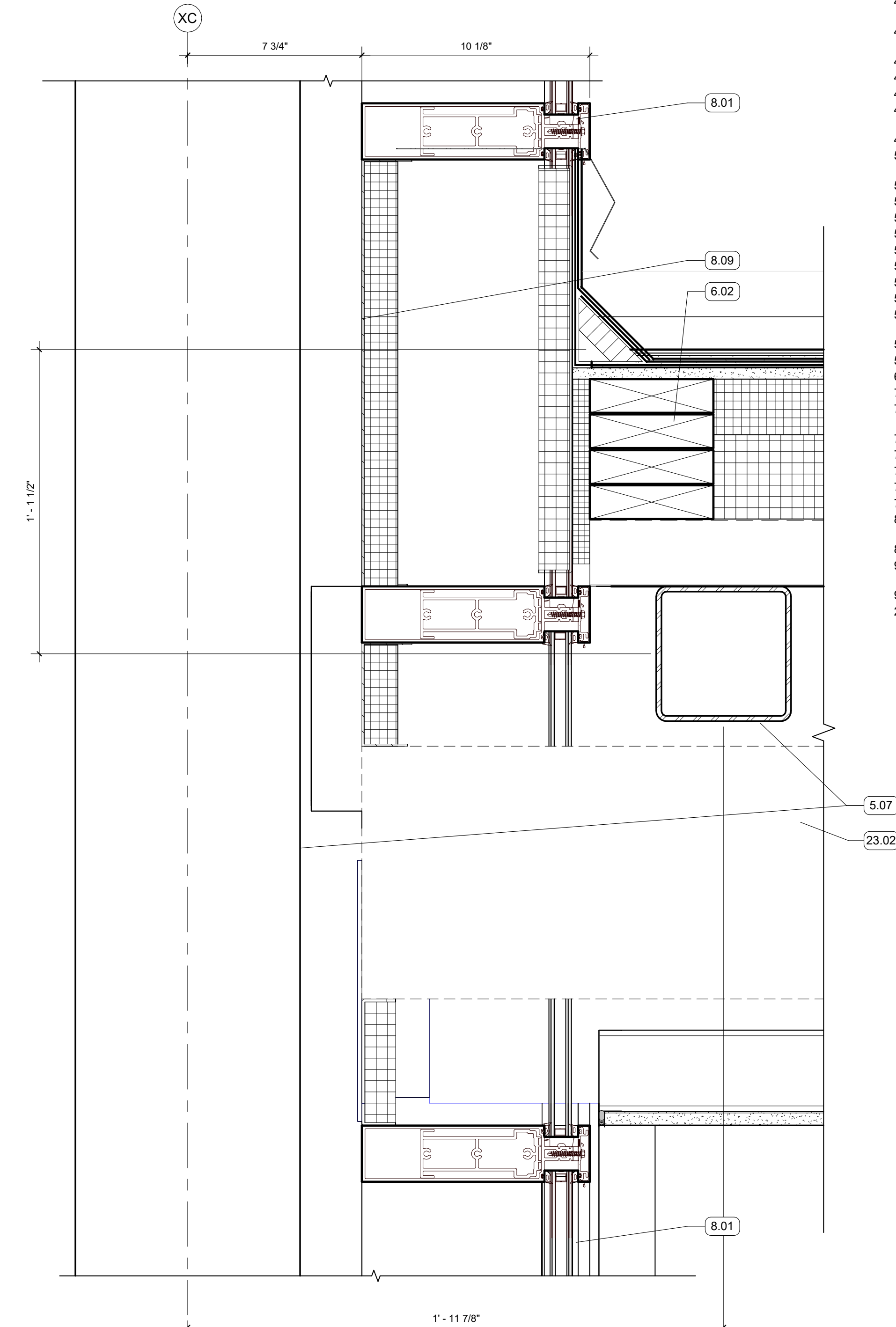
1 SECTION DETAIL - COLUMN WRAP BASE
3\" = 1'-0\" | RE:3/A350



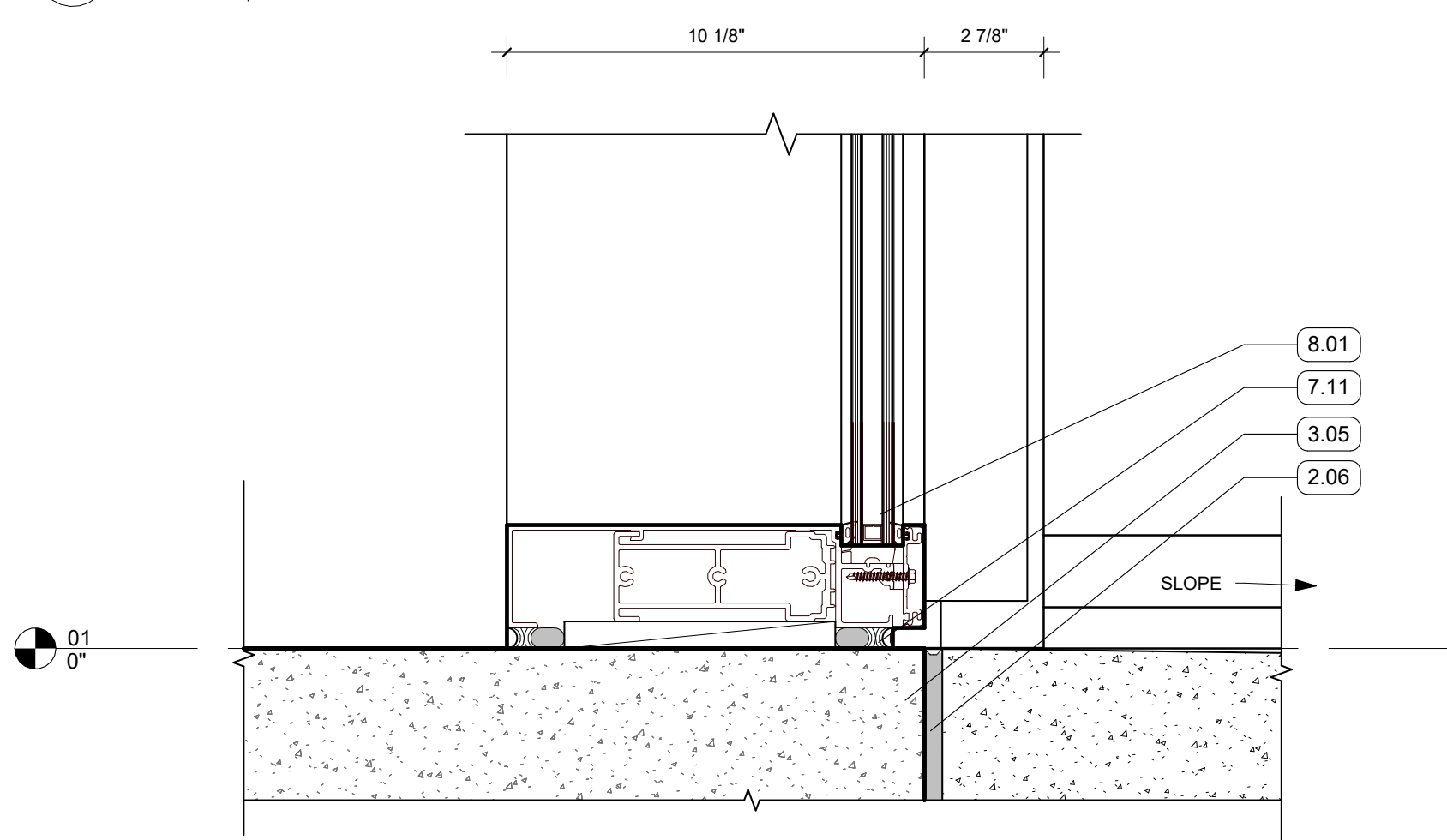
4 SECTION DETAIL
3\" = 1'-0\" | RE:4/A350



3 SECTION DETAIL
3\" = 1'-0\" | RE:4/A350



6 SECTION DETAIL
3\" = 1'-0\" | RE:2/A351



5 SECTION DETAIL
3\" = 1'-0\" | RE:1/A351

- GENERAL NOTES
1. ALL EXPOSED STRUCTURAL FRAMING & DECKING TO BE PAINTED
- KEYNOTES
- 2.02 CONCRETE SIDEWALK
 - 2.06 PREFORMED EXPANSION FILLER & SEALANT
 - 3.05 CEMENT PARGE COAT ON EXPOSED SLAB EDGE
 - 4.01 FACE BRICK VENEER, RUNNING BOND
 - 4.03 6\" RECESSED BRICK COURSE, STACK BOND, PROJECT EVERY 3RD COURSE 1/2\"
 - 4.05 TERRA COTTA RAINSCREEN - COLUMN WRAP, UNIT SIZE #2
 - 4.10 FACE BRICK, SPECIAL SHAPE SILL
 - 4.11 MASONRY ANCHORS
 - 4.12 WEEP VENTS AT 24\" O.C. MIN
 - 4.13 NON-CONTINUOUS ALUMINUM SUBSTRUCTURE
 - 4.20 CAST STONE PANEL
 - 5.03 5 1/2\" COMPOSITE MTL DECK AND CONCRETE SLAB
 - 5.05 6\" METAL TRACK
 - 5.06 6\" METAL STUD FRAMING
 - 5.07 STRUCTURAL STEEL FRAMING
 - 5.09 3 5/8\" METAL STUD FRAMING
 - 5.10 3 5/8\" METAL TRACK
 - 5.11 BRIDGE STUD AS REQ'D
 - 5.13 EDGE ANGLE
 - 5.51 BOX BEAM
 - 5.52 GALVANIZED LOOSE LINTEL - PAINT TO MATCH BRICK WHERE EXPOSED
 - 5.53 SHELF ANGLE - RE: STRUCTURAL
 - 5.54 BRAKE METAL TRIM
 - 6.02 WOOD BLOCKING
 - 7.05 MCM PANEL, SOFFIT
 - 7.06 BATT INSULATION, SIZED TO MATCH STUD DEPTH
 - 7.08 PROTECTION COURSE
 - 7.09 MINERAL FIBER BOARD INSULATION
 - 7.10 THRU-WALL FLASHING, SLOPED TO DRAIN
 - 7.11 BACKER ROD AND SEALANT
 - 7.30 FORMED ALUMINUM TRIM
 - 8.01 ALUM STOREFRONT, CURTAINWALL, OR WINDOW SYSTEM. SEE OPENING SCHEDULE
 - 8.09 BACK PANEL
 - 9.01 5/8\" GYPSUM BOARD; SEE FINISH PLAN FOR FINISH MATERIAL
 - 9.04 5/8\" EXTERIOR SHEATHING
 - 23.02 DUCTWORK, SEE MECHANICAL